

SSVA block progressive distributor:

Product description

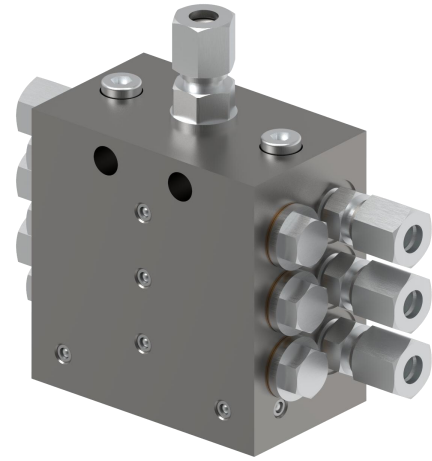
SSVA type metering device is a compact single block progressive metering device. For direct mount of fittings with no need of any sealing inbetween. Available with pin indicator for visual system monitoring or with piston detector for electrical system monitoring.

Features and benefits

- Sizes up to 20 outlets
- High operating pressure
- Exact lubricant metering
- Unique internal crossporting technology
- Optionally equipped with visual monitoring pin or with electrically monitored piston detector

Applications

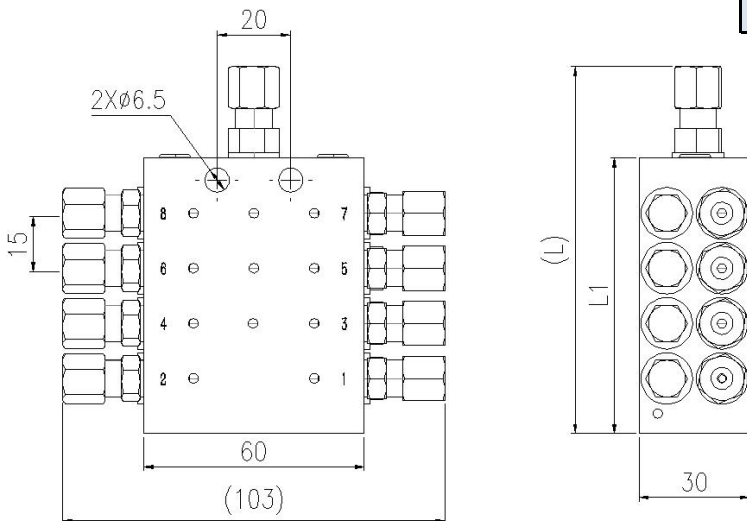
- Construction and mining
- Farm machinery
- Industrial equipment
- Renewable energies



SSVA series

Product parameters:

Content	Parameter
Operating temperature	-40°C~80°C
Outlet flow	0.2ml/cy
Number of outlets	6-20
Operating pressure	35MPa
Start-up pressure	≤2MPa
Applicable grease	NLGI-0#, 1# & 2#
Inlet/outlet thread	M10X1



Note: Outlets #1 and #2 cannot be blocked simultaneously.

Number of holes	6	8	10	12	14	16	18	20
L (mm)	85	100	115	130	145	160	175	190
L1 (mm)	60	75	90	105	120	135	150	165