

AUTOL



ZHENGZHOU AUTOL TECHNOLOGY CO., LTD

No.96, Hehuan Street, High-Tech District, Zhengzhou, China

Web: www.autolgroup.com www.autol.net **E-mail:** info@autol.net

LLC AUTOL RUS

620091, Russian Federation, Yekaterinburg, 18k6 Frontov Brigade Street, office 3

Web: www.autolgroup.ru **TEL:** 8-800-550-20-42 **E-mail:** info@autolgroup.ru

202502

**WORLD LEADING AUTOMATIC LUBRICATION
SOLUTIONS SUPPLIER**



AUTOL

ABOUT AUTOL



1

No.1 brand of centralized lubrication in China. Annual production capacity 200,000 sets.



10

10 CNAS certified laboratories. Provide comprehensive and professional laboratory testing services.



70+

AUTOL products are exported to more than 70 countries and regions.



100+

More than 100 R&D personnel.



300+

Acquired more than 300 technical patents at home and abroad. Widely used in construction machinery, wind power, commercial vehicles, mining, port equipments and many other fields.

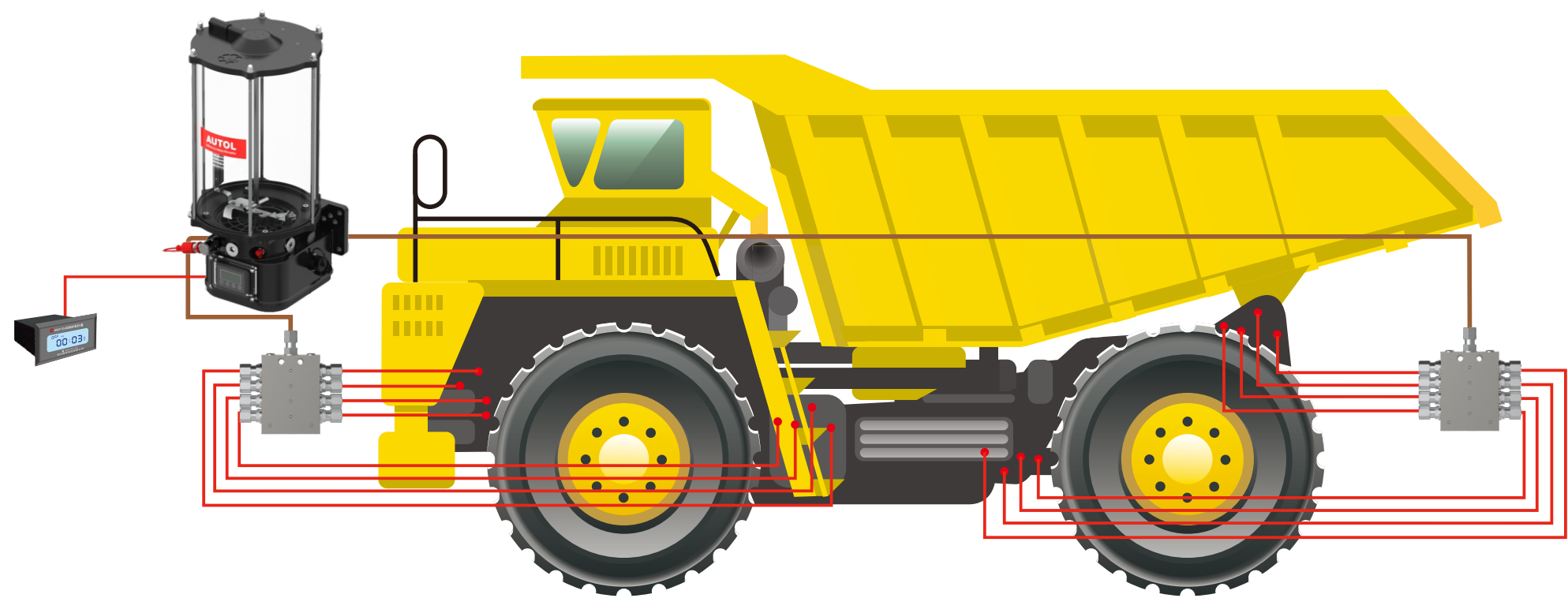


800K+


Up to now more than 800,000 sets of installed lubrication equipments with various models are in operation.




AUTOMATIC LUBRICATION SYSTEM FOR DUMP TRUCKS




System composition



Model	SSVA Series
Maximum pressure	350bar
Number of outlets	6-22 pcs
Start-up pressure	20bar
Grease output	0.2ml/cy
Operation temperature	-40°C~80°C
Applicable grease	NLGI-0#,1#,2#



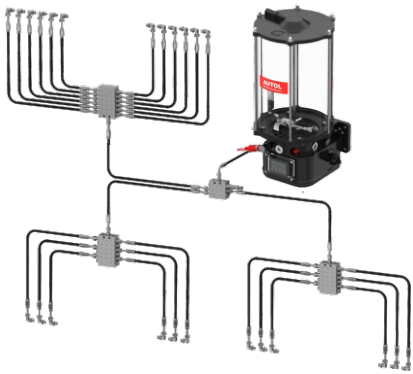
Monitor	AK06/AK07
Installation position	Internal /External
Interval period	1--99h/1--30h
Operation time	1--99min
Alarm code	EE-1 (low level)/EE-2 (system malfunction)/C-number (low temperature protection)
Communication function	Integrated CAN bus. Wireless bluetooth control



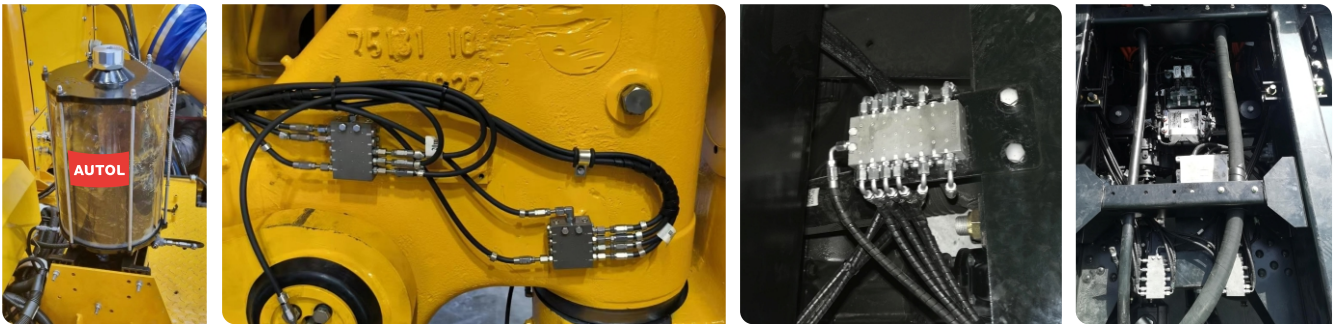
Model	ALPB120 Series
Maximum pressure	350bar
Grease output	1.5, 2.5, 4.5 ml/min
Rated voltage	DC24V/DC12V
Operation temperature	-35°C~70°C
Applicable grease	NLGI-0#,1#,2#
Reservoir	4L-20L
Protection class	IP6K9K

Operation principle

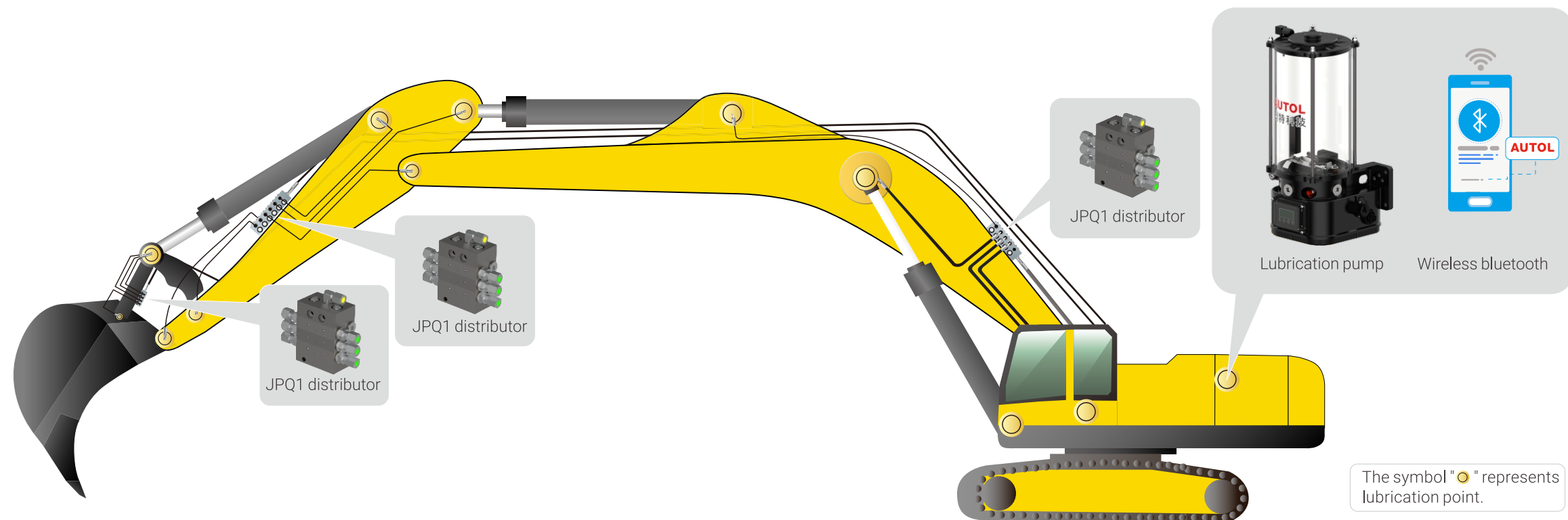
When the lubrication pump is powered, motor drives plungers to move back and forth. Pressurized grease enters distributor via resin tube. The plungers move in order under the action of pressure to distribute the grease to each lubrication point.



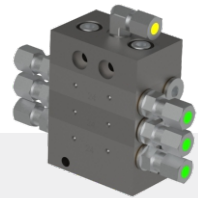
Application cases



AUTOMATIC LUBRICATION SYSTEM FOR EXCAVATORS(≤50T)



System composition



Model	JPQ1 Series
Maximum pressure	300bar
Number of outlets	6-24 pcs
Start-up pressure	20bar
Grease output	0.08~1.60ml/cy (adjustable)
Operation temperature	-35°C~70°C
Applicable grease	NLGI-0# ,1# ,2#



Monitor	AK06/AK07
Installation position	Internal/External
Interval period	1~99h/1~30h
Operation time	1~99min
Alarm code	EE-1 (low level)/EE-2 (system malfunction)/C-number (low temperature protection)
Communication function	Integrated CAN bus. Wireless bluetooth control



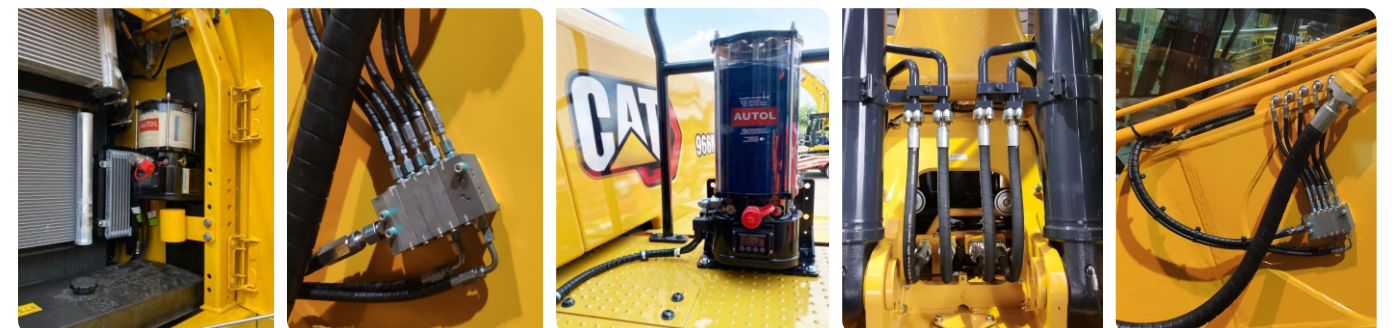
Model	ALPB100 Series
Maximum pressure	350bar
Grease output	1.5, 2.5, 4.5 ml/min
Rated voltage	DC24V/DC12V
Operation temperature	-35°C~70°C
Applicable grease	NLGI-0#,1#,2#
Reservoir	2L-4L
Protection class	IP6K9K

Operation principle

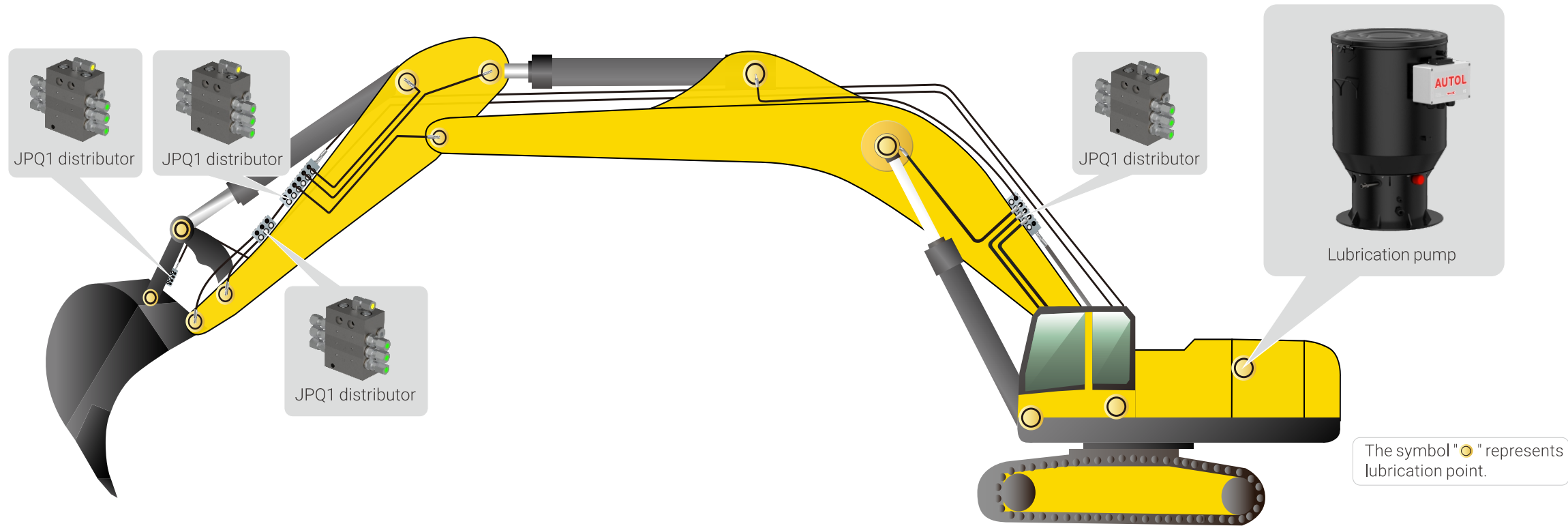
When the lubrication pump is powered, the motor drives the plunger in the pump to move back and forth. The grease is pressurized into the distributors via the main tube. The pistons in the distributors move one by one under the high pressure, and then the grease is distributed into each lube point.



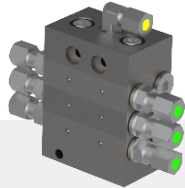
Application cases




AUTOMATIC LUBRICATION SYSTEM FOR EXCAVATORS (50T-170T)



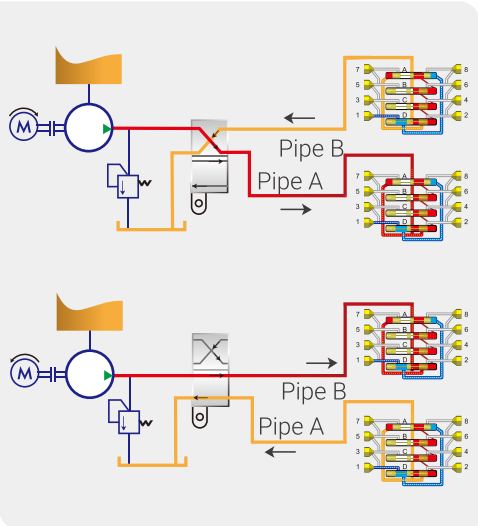
System composition



Model	JPQ1 Series
Maximum pressure	300bar
Number of outlets	6~24pcs
Start-up pressure	20bar
Grease output	0.08~1.60ml/cy (adjustable)
Operation temperature	-35°C~70°C
Applicable grease	NLGI-0#,1#,2#

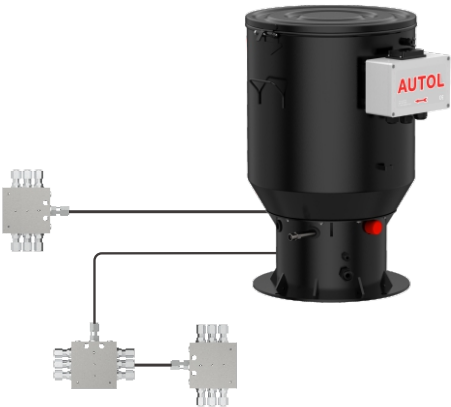


Model	ADPB pump
Maximum pressure	400bar
Grease output	20ml/min
Rated voltage	DC24V
Operation temperature	-40°C~70°C
Rated power	300W
Reservoir	20L~60L



Technical advantages

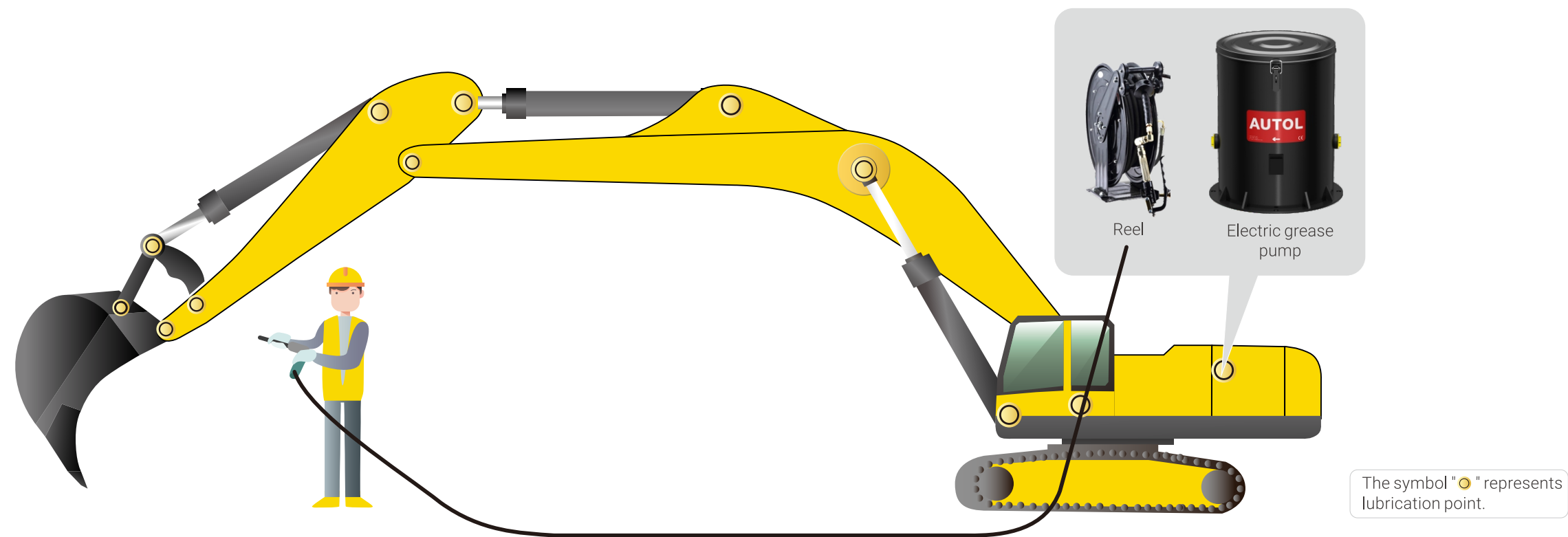
- The output of grease volume can be dynamically adjusted according to different working conditions, temperature and lubrication points,
- Special high power brushless motor,
- Three reservoir volume available - 20L, 40L and 60L,
- Double grease outlets structure, each outlet can control grease output independently,
- Refill grease quickly through the upper lid of the pump.



Application cases



SEMI AUTOMATIC GREASER FOR EXCAVATORS (30T-120T)



● System composition



Maximum pressure	500bar
Overall dimensions	520(L)×300(W)×532(H)mm
Tube length	10m



Model	ADJ300TW
Maximum pressure	400bar
Grease output	300ml/min
Rated voltage	DC24V
Motor input power	600W
Weight	15Kg
Reservoir	20L

Applicable grease:

T>10℃	: NLGI-2#;
-10℃≤T≤10℃	: NLGI-1#~2#;
T<-10℃	: NLGI-0#~1#;
T>20℃	: NLGI-3#.

● Technical advantages

- Special high power brushless motor,
- High pumping pressure and refilling efficiency,
- 20L large capacity reservoir.
- Large flow 300ml/min,
- Superior property,easy operation,

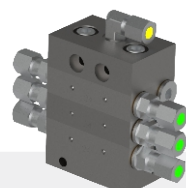
● Application cases




AUTOMATIC LUBRICATION SYSTEM FOR LOADERS




● System composition



Model	JPQ1 Series
Maximum pressure	300bar
Number of outlets	6-24 pcs
Start-up pressure	20bar
Grease output	0.08~1.60ml/cy (adjustable)
Operation temperature	-35℃~70℃
Applicable grease	NLGI-0#,1#,2#



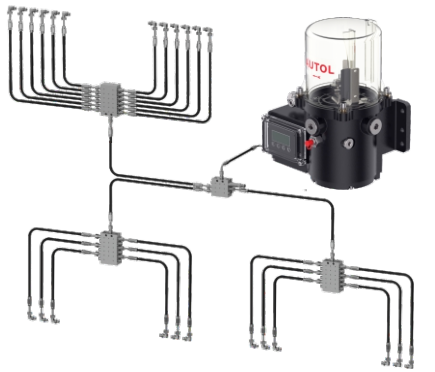
Monitor	AK06/AK07
Installation position	Internal / External
Interval period	1--99h/1~30h
Operation time	1~99min
Alarm code	EE-1 (low level)/EE-2 (system malfunction)/C-number (low temperature protection)
Communication function	Integrated CAN bus. Wireless bluetooth control



Model	ALP80 Series
Maximum pressure	350bar
Grease output	1.5, 2.5, 4.5ml/min
Rated voltage	DC24V/DC12V
Operation temperature	-35℃~70℃
Applicable grease	NLGI-0#,1#,2#
Reservoir	1L-2L
Protection class	IP6K9K

● Technical advantages

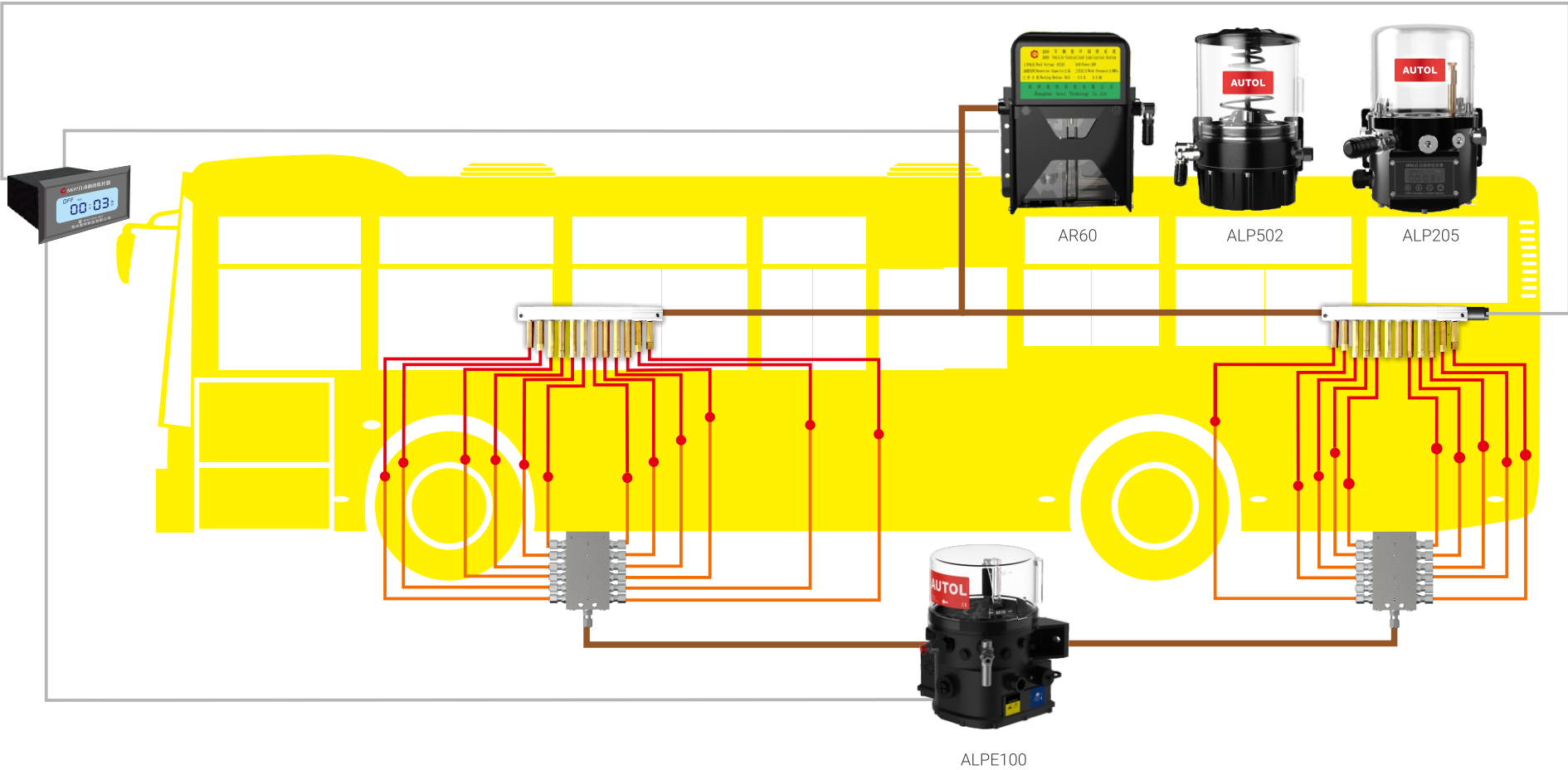
- Integrated CAN bus technology for data exchange,
- Wireless control, enabling real-time detection of system status through bluetooth,
- 1-20 times of single-hole grease ratio for various grease demands of different parts,
- Accurate grease distribution and stable low-temperature performance.




● Application cases



AUTOMATIC LUBRICATION SYSTEM FOR COMMERCIAL VEHICLES

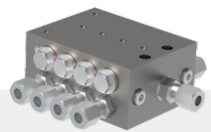


● System composition

	
Model	Single line type
Maximum pressure	63bar
Number of outlets	1~22 pcs
Grease output	0.13,0.2,0.4ml/cy
Operation temperature	-30°C~70°C
Applicable grease	NLGI-000#,00#,0#

	
Monitor	AK07
Installation position	External
Interval period	1~30h
Operation time	1~99min
Alarm code	EE-1 (low level)/EE-2 (system malfunction)/C-number (low temperature protection)
Communication function	Integrated CAN bus. Wireless bluetooth control

	
Model	ALP502
Maximum pressure	45bar
Grease output	55ml/min
Rated voltage	DC24V/DC12V
Operation temperature	-30°C~70°C
Applicable grease	NLGI-000#,00#,0#
Reservoir	2L

	
Model	SSVA Series
Maximum pressure	350bar
Number of outlets	6-22 pcs
Start-up pressure	20bar
Grease output	0.2ml/cy
Operation temperature	-40°C~80°C
Applicable grease	NLGI-0#,1#,2#

	
Monitor	Ak07
Installation position	External
Interval period	1~30h
Operation time	1~99min
Alarm code	EE-1 (low level)/EE-2 (system malfunction)/C-number (low temperature protection)
Communication function	Integrated CAN bus. Wireless bluetooth control

	
Model	ALPE100 Series
Maximum pressure	350bar
Grease output	0.2, 0.3, 0.4, 1.0, 2.5 ml/min
Rated voltage	DC24V/DC12V
Operation temperature	-40°C~70°C
Applicable grease	NLGI-0#,1#,2#
Max. number of outlets/pumping elements	8 sing utilities-2 progressive outlets

ABDB SERIES MULTI LINE PUMP

The ABDB05 multi-line pump can supply lubricant directly to lubrication points or can be used as a centralized lubrication pump in large-sized progressive systems . It can drive up to five elements, which are available in varying sizes for optimum adjustability . The pump' s drive and eccentric shaft design, high-efficiency worm gear, minimal number of parts and multi-range motor provide several advantages. ABDB05 pumps are available with a three-phase flange mount and multi-range motor or with a free shaft end for use with other motors . Various gear ratios and reservoir sizes with or without level control are offered.



Model	ABDB05 Series
Number of outlets	1~5 pcs
Operating temperature	-20°C~70 °C
Lubricants	oil: viscosity of at least 40 mm²/s grease: up to NLGI 2
Operating pressure	Max. 350 bar
Reservoir capacity	4L,8L,20L (transparent plastic)
Output	PE1.5/PE2.5/PE4.5,M22×1.5, PR adjustable M22×1.5 0.035ml/cy~0.15ml/cy (adjustable)
Drive	gear motor, 0.12 kW
Ratio	70:1,300:1
Electrical connection	multi-phase motor : 380–420 VAC / 50 Hz; 440–480 VAC / 60 Hz; single-phase motor: 500VAC/50Hz
Protection class	IP55

The ABDB12 multi-line pump that can drive up to 12 elements. It is capable of handling direct supply of lubrication points in multi-line systems or can be used as a centralized lubrication pump in large-sized progressive systems. The drive and eccentric shaft design, high-efficiency worm gear and minimal number of parts provide the pump with several advantages. ABDB12 pumps are available with a powerful, three-phase, multi-range motor. Suitable for both grease and oil, the reservoir is offered with or without level control.



Model	ABDB12 Series
Number of outlets	1~12 pcs
Operating temperature	-20°C~70 °C
Lubricants	oil: viscosity of at least 40 mm²/s grease: up to NLGI 2
Operating pressure	Max. 350 bar
Reservoir capacity	30L(metal)
Adjustable Output	K7 (0.1 ml/cy ~ 0.36 ml/cy),M27×1.5 K12 (0.29 ml/cy ~ 1.05 ml/cy)
Drive	gear motor, 0.75 kW
Ratio	60:1
Electrical connection	multi-phase motor : 380–420 VAC / 50 Hz; 440–480 VAC / 60 Hz; single-phase motor: 500VAC/50Hz
Protection class	IP55

ABDB SERIES MULTI LINE PUMP

The ABDB15 multi-line pump that can drive up to 15 pump elements Different sizes of adjustable elements are available It is capable of handling direct supply of lubrication points or can be used as a centralized lubrication pump in large-sized progressive systems. ABDB15 pumps are available with a three-phase, multi-range motor, with a single-range motor, with a free shaft end for use with other motors, or with an oscillating drive. Various gear ratios and reservoirs of different sizes and materials are available. The reservoirs are suitable for both grease and oil and are offered with or without level control.



Model	ABDB15 Series
Number of outlets	1~15 pcs
Operating temperature	-20°C~70 °C
Lubricants	oil: viscosity of at least 40 mm²/s grease: up to NLGI 2
Operating pressure	Max. 350 bar
Reservoir capacity	8L,20L,(transparent plastic) 30L,60L,100L,(metal)
Adjustable Output	K6 (0.033 ml/cy ~ 0.16 ml/cy),M22×1.5 K7 (0.045 ml/cy ~ 0.23 ml/cy),M22×1.5
Drive	gear motor, 0.25 kW
Ratio	7:1(only for free shaft), 50:1,100:1,500:1
Electrical connection	multi-phase motor : 380–420 VAC / 50 Hz; 440–480 VAC / 60 Hz; single-phase motor: 500VAC/50Hz
Protection class	IP55

A derivative of the ABDB15 pump, the ABDB30 multi-line pump that can drive up to 30 adjustable pump elements. It is used within a multi-line system to directly supply lubrication points or within large-sized progressive systems. Due to the increased number of possible pump elements compared to the ABDB30 a powerful 0.25 kW motor is used.

ABDB30 pumps are available with a three-phase, multi-range motor or a single-range motor, and various gear ratios are offered. Suitable for grease or oil, reservoirs are available in different sizes with or without level control.



Model	ABDB30 Series
Number of outlets	1~30 pcs
Operating temperature	-20°C~70 °C
Lubricants	oil: viscosity of at least 40 mm²/s grease: up to NLGI 2
Operating pressure	Max. 350 bar
Reservoir capacity	30L,60L,100L (metal)
Adjustable Output	K6 (0.033 ml/cy ~ 0.16 ml/cy),M22×1.5 K7 (0.045 ml/cy ~ 0.23 ml/cy),M22×1.5
Drive	gear motor, 0.25 kW
Ratio	7:1(only for free shaft), 50:1,100:1,500:1
Electrical connection	multi-phase motor : 380–420 VAC / 50 Hz; 440–480 VAC / 60 Hz; single-phase motor: 500VAC/50Hz
Protection class	IP55

SINGLE POINT AUTO LUBRICATOR



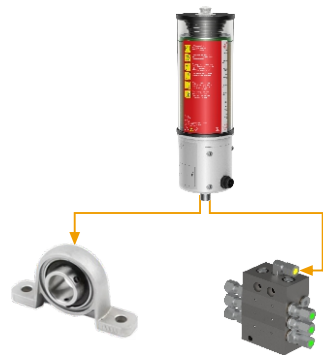
ALP01 A/B/C Series

Application

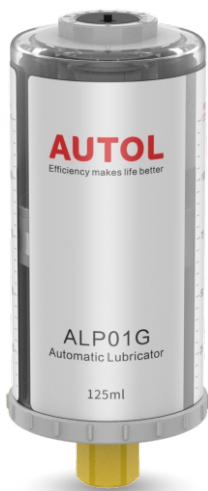
Places with narrow space and only remote installation available; places where bearings are seriously worn after being polluted by dirt or dust; places where oil needs to be filled frequently but is not easy to be filled; and all industrial bearings that require lubrication grease to be filled.

Product parameters

Maximum pressure	40bar	Outlet connector specification	R3/8 (male)
Delivery capacity per stroke	0.24ml	Operation mode	Run out of grease in reservoir 1/3/6/12/24 months (5 modes)
Battery voltage	A 3.6V lithium battery pack B Standard 3.6V lithium battery C-1 External DC 9~36V power supply C-3 External AC 230V power supply	Outline size	285mm×85mm (500ml) 225mm×85mm (250ml) 195mm×85mm (120ml)
Reservoir Capacity	500ml/250ml/120ml (Grease can be added into it repeatedly)	Control mode	Controlled by built-in monitor
Applicable temperature	-20°C~60°C	Display mode	Displayed by LED indicator
Applicable grease	NLGI-2#	Protection class	IP65



SINGLE POINT AUTO LUBRICATOR



ALP01G Series

The automatic lubrication system ALP01G is available in two convenient sizes(60 cm³ / 125 cm³).

It can be used for inside or outside applications at temperatures ranging from -35°C~70°C. Discharge period setting is flexible and can be adjusted from 1 to 12 months using the dial on top of the lubricator.

ALP01G comes fully assembled and ready-to-use. Simply turn the dial to the desired discharge period and the system is activated.The electronically controlled chemical reaction will build up the pressure that is necessary to continually supply the lubrication point with fresh lubricant.

Technical advantages

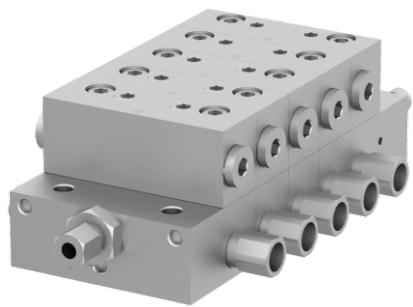
- Variable time setting options reduces compromise relating to selection of lubricant dispensing rates,
- If required, the time setting can be altered during service and the lubricator can be stopped and started again,
- Transparent lubricator body is perfectly clear allowing the position of the lubricant piston to be easily inspected,
- Slimline design minimises the space required for installation,
- Provides simple options for remote mounting including beam and cage attachment options.



Product parameters

Maximum pressure	5bar	Remote installations*	R1/4
Operating principle	Gas generating unit	Application area	Apply for motor, pump, rotary equipment/conveyor belt/ cementindustry,mining equipment/paper, pulp industry/ cateringindustry/steel industry and other small bearing lubrication.
Discharge period (at +20°C with NLGI-2#)	1, 2, 3. 12 months	Protection class	IP68
Lubricant volume	60cm³ and 125cm³		
Applicable temperature	-35°C~70°C		
Applicable grease	NLGI-2#		

AMB DISTRIBUTOR



The AMB series combined progressive distributor is a quantitative valve mechanism in which the valve core moves in sequence in a progressive manner. Through the sequential movement of the valve core, a specified amount of lubricant can be injected into the parts that need lubrication in sequence.

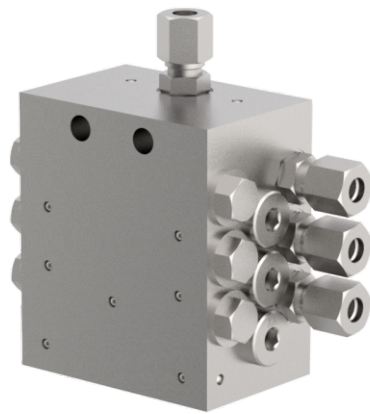
Technical advantages

- Quick-change working valve components can be removed from the base unit without disturbing any lubrication lines, minimizing labor costs and maximizing machine uptime,
- Accessories such as magnetic and electronic proximity switch cycle indicators provide positive assurance of successful lubrication,
- Alternative outlets on the valve face for optional performance indicators eliminate guesswork when troubleshooting,
- Built-in outlet check valve ensures accurate lubricant addition every time,
- Extremely rugged design for use in extreme environments.

Product parameters

Max. operating pressure	300bar	Inlet thread	AMBM:PF 1/4,AMBX:PF3/8, AMBZ:PF1/2,
Output flow	AMBM:0.123,0.164,0.246,0.48ml/cy,	Outlet thread	AMBM:PF 1/8,AMBX:PF1/4, AMBZ :PF3/8,
	AMBX :1.23,1.64ml/cy,	Number of outlets	6-16pcs
	AMBZ :4.92,9.84ml/cy,	Ambient temperature range	-40°C~70°C

SSVD DISTRIBUTOR (OUTPUT ADJUSTABLE)



SSVD type metering device is a compact single block progressive metering device with adjustable output by means of different metering screw sizes. The screw meters the output for a pair of out_x0002_lets (opposite outlets).

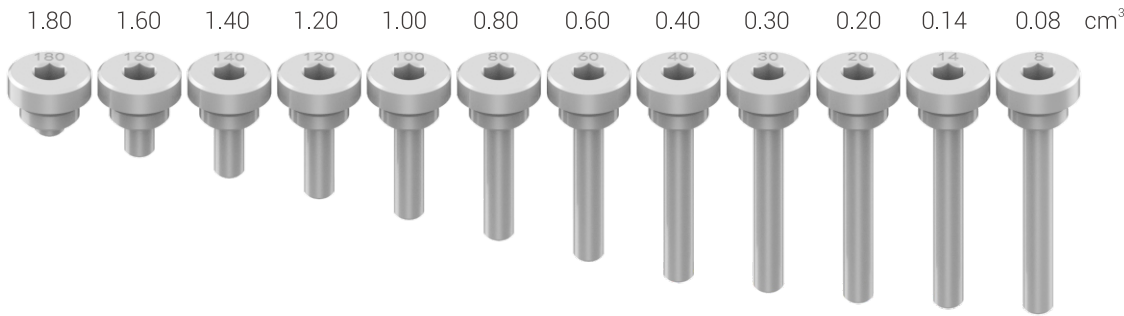
For direct mount of fittings with no need of any sealing in-between. It is a versatile metering device available in many variants regarding type of monitoring or surface treatment.

Product parameters

Maximum operating pressure	350bar	Material	Nickel-zinc, steel
Minimum operating pressure	20bar	Function monitoring	HALL Sensor
Number of outlets	6-22 pcs	Ambient temperature range	-40°C~80°C
Inlet thread/Outlet thread	M10×1	Applicable grease	NLGI 000# ~ 2#
Connectable lubrication hose	Ø 6	Suitable lubrication grease viscosities	Lubrication grease of at least 40 mm ² /s at ambient temperature
Metering volume per stroke and outlet	The metering volume is adjusted via metering screws and amounts to maximum 1.8 cm ³ per stroke		

SSVD metering screws

The output of the SSVD divider can be adjusted by using different metering screws.



ASL-V XL DISTRIBUTOR



Series ASL-V XL metering devices are for single-line, high-pressure centralized lubrication systems dispensing lubricants compatible with polyurethane seals up to NLGI-2#. Output is externally adjustable. An indicator stem permits visual check of metering device operation. Individual metering devices can be removed easily for inspection or replacement. Each ASL-V XL metering device includes a clear, polycarbonate protective cap.

● Technical advantages

- Shipped with manifolds from 1 to 6 ports,
- Output is externally adjustable,
- Clear, polycarbonate protected cap over indicator stem permits visual check of operation,
- Can be removed easily for inspection or replacement.

● Product parameters

Max. operating pressure	400bar	Connection main line	3/8 NPTF (F)
Metering quantity	0.25~5ml/cy	Connection outlet	1/8 NPTF(F)
Number of outlets	1~6 pcs	Ambient temperature range	-40°C~70°C
Relief pressure	70 bar	Applicable grease	NLGI-000# ~ 2#
Materials	Carbon steel		



ASL-1 DISTRIBUTOR



The series ASL-1 metering devices are for single-line, high-pressure centralized lubrication systems dispensing lubricants compatible with flouroelastomer packings and viscosity up to NLGI 2. Output is externally adjustable. An indicator stem pemmits visual check of metering devices operation. Individual metering devices can be eremoved easily for inspection or replacement.

● Technical advantages

- Shipped with manifolds from 1 to 6 ports (lubrication points),
- Output is externally adjustable,
- Each indicator stem permits visual check of injector operation,
- Individual metering devices can be removed easily for inspection or replacement,
- Includes fitting for feed lines via alternate outlet port.

● Product parameters

Max. operating pressure	240bar	Connection main line	3/8 NPTF (F)
Metering quantity	0.131~1.31cm ³	Connection outlet	1/8 NPTF(F)
Number of outlets	1~6 pcs	Ambient temperature range	-30°C~80°C
Relief pressure	40 bar	Applicable grease	NLGI 000# ~ 2#
Materials	Carbon steel		



ATK-06 CONTROL CABINET



Control cabinet is the control center of lubrication system, and its core control component is PLC,which could control each electrical part of the centralized lubrication system.

The operating status of the system is monitored in real time through the touch screen.

Technical advantages

- During the automatic operation of the equipment, when grease is supplied to each lubricating point, the touch screen on the control cabinet (PLC) will display the grease supply time and the actual amount of grease supplied at that point,
- Each lubrication point can set cycle interval time and the amount of lubrication grease through the touch screen,
- After the system enters the cycle interval time, the touch screen on the control cabinet (PLC) will display the countdown of the interval time, so as to clearly indicate the current equipment operating status.

Product parameters

Power supply	AC380V 50Hz three-phase four-wiresystem
Control mode	Automatic / Manual
Alarm signal	Liquid level high and low, block signal
Communication method	Rs485
Cycle interval time	0h 1min~999h 59min (adjustable)
Grease supply time	1~255 seconds (adjustable)

OUR BUSINESS NETWORK

Providing customers with excellent products and perfect services is the driving force of our unremitting pursuit. We provide users with "first-time" technical services and arrange regular inspection mechanism.

- Professional training service before use,
- Installation and trial run guidance,
- Training services of basic operation and daily maintenance,
- One year quality guarantee,life time repair service,
- We have well organized after-sales network,and our professional engineers and partner distributors will response to your questions timely.



OUR PARTNERS



SHANTUI



LOVOL

**BELAZ****IZ-KARTEX**

NOTE

